

# STYLEX

Model: Cove with 4 Blade Base Lounge

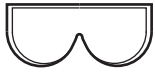
\*Refer to P.4 for model variations

## Disassembly and Recycling Document

Disassembly Time: 5min / No Special Training Required

### Tools Required

- Safety Glasses
- 3/8 Allen Wrench
- Phillips Screwdriver



### Breakdown Steps

1. Turn the chair on its back to reveal the aluminum 4 blade base. Unscrew the 4 bolts holding the base assembly to the chair. (Figure A1)

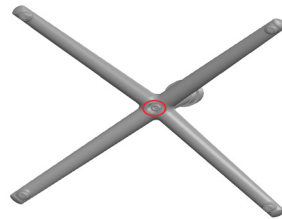
A1



- Lounge Seat Shell
- Material: Plywood, Foam

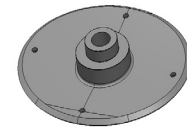


B1



- Lounge Yoke
- Material: Aluminum

x1  
♻️



2. After removing the base from the chair, unscrew the bolt from the bottom of the base, separating the base and the cylinder. (Figure B1)

- Lounge Cylinder
- Material: Steel

x1  
♻️



- Lounge 4 Blade Base
- Material: Aluminum

x1  
♻️



- Socket Head Shoulder Screw
- Material: Steel

x4  
♻️



# STYLEX

Model: Cove with 4 Blade Base Ottoman

\*Refer to P.3 for model variations

## Disassembly and Recycling Document

Disassembly Time: 5min / No Special Training Required

### Tools Required

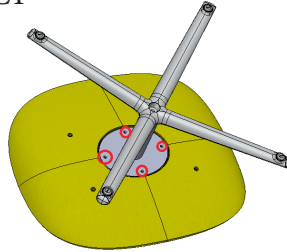
- Safety Glasses
- 3/8 Allen Wrench
- Phillips Screwdriver



### Breakdown Steps

1. Turn the ottoman on its back to reveal the aluminum 4 blade base. Unscrew the 4 bolts holding the base assembly to the ottoman. (Figure C1)

C1

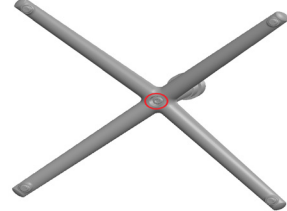


- Ottoman Seat Shell
- Material: Plywood, Foam



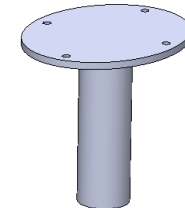
2. After removing the base from the chair, unscrew the bolt from the bottom of the base, separating the base and the column. (Figure D1)

D1



- Ottoman Colum Plate
- Material: Aluminum

x1  
♻️



- Ottoman 4 Blade Base
- Material: Aluminum

x1  
♻️



- Socket Head Shoulder Screw
- Material: Steel

x4  
♻️



# STYLEX

Model: Cove with Sled Base

\*Refer to P.4 for model variations

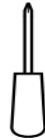
## Disassembly and Recycling Document

Disassembly Time: 5min / No Special Training Required



### Tools Required

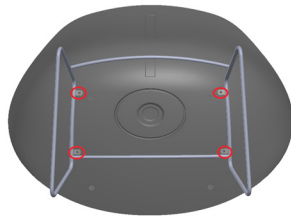
- Safety Glasses
- 3/8 Allen Wrench
- Phillips Screwdriver



E1

### Breakdown Steps

1. Turn the chair on its back to reveal the sled base. Unscrew the 4 bolts holding the base assembly to the chair. (Figure E1) Disassembly steps are similar for lounge and ottoman units.

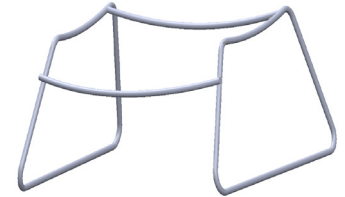


- Lounge Seat Shell
- Material: Plywood, Foam



- Lounge Sled Base
- Material: Aluminum

x1  
♻️



- Socket Head Shoulder Screw
- Material: Steel

x4  
♻️



Disassembly and Recycling Document  
Disassembly Time: 5min / No Special Training Required

Chair Variations

Cove Chair:

Follow similar disassembly instructions for chair variations.

All Cove lounge units have three base options:

- 4 Blade Base (Figure G1).
- Wood 4 Blade Base (Figure G2).
- Sled Frame (Figure G3).

Ottomans have two base options:

- 4 Blade Base (Figure H1).
- Sled Frame (Figure H2).

G1



G2



G3



H1



H2

